



**People With
Disabilities**
ACT Inc

'OUT & ABOUT WITH ABILITY'

Volume 7 * Issue * July 2010

INSIDE THIS ISSUE:

- Promoting Liveable Designed Housing
- The Squeaky Wheel
- Scooters on ACTION Buses
- Smoke Alarms – Save Lives
- In your Best Interest
- PWD ACT Latest Organisational Members
- Upcoming Activities & Community Events
- Employment Opportunities
- Free PWD ACT Membership Disability Definition
- Organisational Members
- PWD ACT Contact Information

PWD ACT ACTIVITIES OVER THE PAST MONTH:

6 July	PWD ACT Board meeting.
8 July	ACTEAS meeting – attended by Ian Trehwella
16 July	ACTION Buses meeting – attended by Ian Trehwella
21 July	IT Support Forum – attended by Maida Kajkic
27 July	Taxi Industry & WAT Consortium meeting – attended by Margo Hodge and Ian Trehwella
28 July	NICAN Web Launch – attended by, Nicole O'Callaghan, Sarah Ferguson, and Maida Kajkic

▣ **19 August**

[World Humanitarian Day](#)

▣ **21 August**

[Federal Election – Don't Forget to Vote](#)

PROMOTING LIVEABLE DESIGN HOUSING

Disability Discrimination Commissioner, Graeme Innes, today joined leaders from the housing, government and community sectors to celebrate the launch of an agreement for working together to change the way we design and build our homes.

"This is a unique partnership agreement that sets out a plan of action with the goal that, by 2020, all new housing will include a number of basic design features that will make them safer and easier to move around in," said Commissioner Innes. "This includes features such as stepless entries and wider doorways."

The National Dialogue on Universal Housing Design - Strategic Plan, commits the signatories to working together to develop education and training resources, releasing technical guidelines to assist the housing industry and identifying possible incentives for encouraging industry and owners to adopt the use of the technical guidelines.

The plan also calls on government at all levels to take the lead by ensuring all new housing that receives government funding incorporates the new design features.

"Our objective is to come up with a plan that will address the growing need to design our homes in a way that can easily accommodate our changing needs over our lifetime", said Commissioner Innes.

The group of leaders, from key organisations in the disability and ageing sectors, the residential building and property industry and government, have agreed to work together to promote the benefits of universal housing design.

Universal housing design can make homes easier and safer for young families and people who have short or long term injuries or illnesses, as well as senior Australians and people with disability, to live in.

The group first met nine months ago at the invitation of Parliamentary Secretary Bill Shorten and Therese Rein.

"Our needs are constantly changing over our lifetime - we may have children and use prams, we may break a leg, develop a disability or simply lose our capacity to get around as well - however, our homes don't change unless we have to change them, often at great cost," said Commissioner Innes. "As the goal this group has set itself is to make all future housing better able to meet our changing needs, I am looking forward to this partnership delivering real change over the next few years."

The members of the National Dialogue are: Australian Human Rights Commission; Australian Institute of Architects; Australian Local Government Association; Australian Network for Universal Housing Design; COTA Australia; Grocon; Housing Industry Association; Lend Lease Primelife; Master Builders Australia; National People with Disabilities and Carers Council; Office of the Disability Council of NSW; Property Council of Australia; Real Estate Institute of Australia, Scotland and Victorian Building Commission.

By Robert Altamore
Executive Officer

People With Disability ACT

THE SQUEAKY WHEEL

Are political parties, particularly Labor and Liberal, effective at responding to the needs of people with disability? Let's face it, the issues and needs that people with disability bring up with politicians are actually necessities. It seems that politicians do not often listen to people with disability because we are a 'minority group'.

It is a proven fact that government responsiveness is directed by public opinion. In short 'the squeaky wheel gets the oil'. What does this mean and why does it appear that people with disability remain overlooked in public policy? At first thought, people with disability seem to be 'getting the oil' with the beginnings of the National Disability Insurance Scheme, the Productivity Commission report and the election of Kelly Vincent into the South Australian government. These advancements are a positive start. But we still have a long way to go.

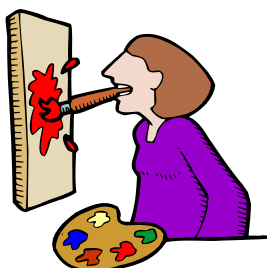
People with disability still need to be 'the squeaky wheel', only in a positive way. We, as a collective group, have made our voices heard. We have shown, through persistence, determination and hard work, that people with disability will not be quiet and accept any government response that politicians may feel inclined to pass our way.

The point is, people with disability are mothers, fathers, daughters, brothers, community leaders, politicians and very powerful business people. I have heard one of our politicians, on numerous occasions, saying that people with disability suffer from a lack of power and wealth. The wealth statement is certainly true for many people with disability, but I completely disagree with the 'lack of power'. I think people with disability have tremendous power, power to influence government and power to educate.

People with disability have a collective voice, a collective voice that has been very effective in the past and will continue to be very effective in the future. People with disability, their carers and family must remember that we do actually have power and not to listen to anybody who tries to say otherwise. The Federal election will be called soon.

Remember, people with disability do have power and insist on being heard

By Nicole O'Callaghan
PWD ACT Board Member





SCOOTERS ON ACTION BUSES

The issue of why scooters are not allowed on ACTION Buses was raised by PWD ACT at the ACTION's Accessible Transport Group's meeting on 16 July 2010.

Firstly there is the issue with regard to all new buses Australia wide now needing to comply with the Australian Standard for Accessible Public Transport. This Standard came into effect in 2002 and specifically determines the space for wheelchair travellers on any new buses - often referred to as the footprint. These dimensions for accessing the footprint and the footprint are on ACTION's Website.

http://www.action.act.gov.au/accessible_travel.html#mobility

Whilst the wheelchair access on all new buses as the Standard identifies does have limitations especially for large power wheelchairs and bariatric wheelchairs all of these must fit through the front wheel-housings to enable a wheelchair traveller to get to either of the two positions on the new accessible buses where they will sit to travel. This is also a consideration with regard to the actual size of public buses allowed on roads and is governed by Transport Regulations.

It is this same tight access point between the front wheel housings and the wheelchair footprint of all new buses that is the restricting factors that scooters must need to address before they could enter and travel on the accessible buses. You will also be aware that many scooters are large, have no standardisation and would certainly not be able to fit through this tight entry point to get too where they sit.

I understand that it is for these reasons that ACTION are unable to allow particularly the medium to large scooters to travel on the new accessible buses. It is not about scooter users generally, but more about the size of the equipment and its ability to negotiate the tight access point. If you are able to get those dimensions from the ACTION website or would like to get some idea as to whether your current scooter would enter through the tight front access point, ACTION could arrange to measure your scooter and give you an idea if it were possible to get onto the accessible buses. If you would like this to happen you would need to ring and make arrangements with Paul Udovisi on 6213 0763 at ACTION who could arrange to have this done.

However, if you were also considering any new mobility device, whether it be power wheelchair or scooter and that may be an option, you should ensure its dimensions are such that it will fit on the accessible buses thereby providing you the additional choice to travel on the improving accessible ACTION Bus network.

Ian Trewhella AM
Vice President, PWDACT

SMOKE ALARMS

TIMELY WINTER REMINDER - WORKING SMOKE ALARMS SAVE LIVES

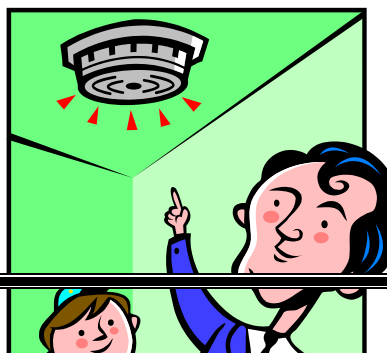
Smoke alarms and electrical heating as this can be another reason for a fire accident in your home. If you do have difficulties with your smoke alarm in battery replacement or need to install smoke alarm, please contact your local fire brigade remember they can only install the battery operated smoke alarm.

Smoke alarms that are properly installed and working correctly greatly increase the survival rate of occupants of a building in the event of a fire.

There are two types of smoke alarms available for residents on the market, the ionisation smoke alarm and the photoelectric smoke alarm. The photoelectric smoke alarm may be more effective in detecting smouldering fires. The ACT Fire Brigade recommends that as your ionisation smoke alarm becomes faulty or nears its expiry date (usually ten years) you consider replacing it with a photoelectric smoke alarm.

1. Smoke alarms should be installed in or near bedrooms or where people sleep.
2. If you have a multi level home, a smoke alarm should be installed on each level.
3. Smoke alarms should be tested monthly.
4. Keep the smoke alarm clean; vacuum the cover and vents of the alarm regularly.
5. If your smoke alarm should go off accidentally open doors and windows and use a newspaper or magazine to fan the smoke away from the alarm.
6. Batteries should be replaced once a year at the end of daylight saving.
7. Install the smoke alarm as per manufacturer's instructions.
8. A 240 volt smoke alarm with battery backup and interconnected with other smoke alarms are a preferred option.
9. Smoke alarms for the deaf and hard of hearing are also available.
10. Smoke alarms should be compliant with the Australian Standard.
11. When your smoke alarm activates, if safe, investigate and if necessary follow your home evacuation plan.
12. Know two ways to escape your home, have a meeting place next to the mail box away from entrance to the drive away.
13. Practise your plan.

The above information regarding smoke alarms is taken from the Emergency Services Australia (ESA) Community Newsletter for July 2010.



IN YOUR BEST INTEREST

COMPANION CARD

The **Companion Card** enables people with disability who require life long attendant care support from companion to participate at most venues and activities to do so without incurring the cost of a second ticket for their companion.

It aims to support greater social inclusion for people with a disability and their cares and provides businesses with a practical way on meeting some of their obligations under anti-discrimination legislation.

The ACT Companion Card Program is managed by Disability ACT, part of the Department of Disability, Housing and Community Services (DHCS).

For more information:

Phone: (02) 6207 1086

TTY: (02) 6205 0888

Email: companioncard@act.gov.au

www.companioncard.act.gov.au

Or

Contact PWD ACT on (02) 6286 4223 to request a Companion Card Application Form

ACCESSIBLE BUS STOPS

Roads ACT has the responsibility of upgrading bus stops to comply with the Disability Standard for Accessible Public Transport. They would like to upgrading bus stops where people with disabilities currently live and may be using accessible buses.

To achieve this and to get these targeted bus stops into Roads ACT ongoing upgrade program needs people with disabilities to tell them about the bus stops they use.

The information Roads ACT require to identify the bus stop is: the suburb, street and the street number of the nearest house to the bus stop a person with disability uses.

Contact:

Ian Trehella AM
Vice President
People With Disabilities ACT
it45@tpg.com.au

ACCESSIBLE VENUES

Attention anyone who has a need for greater disability access - you may have a family member, such as an elderly parent or friend that you would like to go out and about with in Canberra?

Please see this emerging new accessible venues website and make time to fill out a very quick and easy online survey.

Check out www.gr8venue.com

Huy Nguyen

<http://twitter.com/Gr8venue>

MB: 0402 20 7775

Huy prefers to meet in wheelchair accessible venues.

GPO Box 1103, Canberra ACT 2 601

STREET LAW- FREE SERVICE

Street Law will assist people who are homeless or are at risk of becoming homeless by providing free legal service and connecting clients with other services – the service is free.

Phone: 180 6257 2931 0 STR LAW (1800 787 529)

Office:(02 6257 4801

<http://streetlaw.org.au/>

Email: info@streetlaw.org.au

NICAN'S NEW WEB PAGE

Nican is information on recreation, tourism, sport and the arts for people with disAbilities and supports an Australian society where any recreational opportunity values diversity, supports freedom and choice and strengthens inclusive communities.

Nican aims to create active and dynamic national links between people, places and resources that improve access to recreation experiences for people with disAbilities and their communities.

Nican is funded as an Information Service by the Australian Government Department of Families, Housing, Community Services and Indigenous Affairs.

Check out New Web Page

<http://www.nican.com.au/>

PWD ACT LATASST ORGANISATIONAL MEMBERS

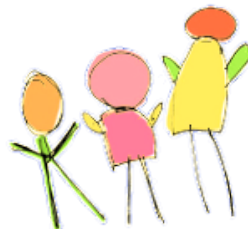


Australia's most experienced independent technology testing company

The team at Access Testing contains not only **strong testing expertise** but also **strong business expertise. Effective testing is crucial** to your organisational productivity. A quality testing program can minimise the risk your business takes when it invests in new technology.

www.accesstesting.com
sue.dwyer@accesstesting.com
Phone: 02 6209 2602

Friends of Brain Injured Children ACT Inc



If you have a child whose therapy need is not being met, contact Friends of Brain Injured Children. We may be able to help.

<http://fbic.org.au/about>

Phone: SHOUT Office on (02) 6290 1984, or

**We encourage you to support our organisational members
And
We Welcome New Members**

UPCOMING ACTIVITIES & COMMUNITY EVENTS

HEARING EXPO 2010

**Wednesday, 25 August - Official Opening 10.30am
Hellenic Club, Matilda Street PHILLIP ACT**

The Expo will be Officially Opened by Dr Anthony Hogan – Fellow, National Centre for Epidemiology and Population Health. Australian National University. Dr Hogan will present a paper: *“Hearing and Well Being”*

There will be an opportunity to meet members from:

- Better Hearing Australia
- Canberra Tinnitus Self Help Group
- Canberra Cochlear Implant Support Group
- Canberra Deaf Children’s Association
- Canberra Deaf Club
- Sydney Cochlear Implant Centre
- The Shepherd Centre
- SHOUT
- Newborn Baby Screening

Join in with a Lip Reading Class – 2pm

**ACTCOSS FORUM: MEET YOUR LOCAL FEDERAL
CANDIDATES**

ACTCOSS is hosting a community sector forum, providing an opportunity to meet, and question, federal election candidates for the Senate and House of Representative seats of Canberra and Fraser.

The forum is designed to allow community sector participants the chance to meet and engage with the candidates directly. Candidates will have the opportunity to discuss key issues in small groups. The groups will be rotated allowing as much interaction as possible across all participants.

Date: Monday 16 August, 2010

Time: 2pm – 4pm

Venue: Room 8, Griffin Centre, Genge St, Canberra City

Cost: Free

For further details and to register please contact Lisa on 6202 7200. Or email her on lisa@actcoss.org.au by Friday 13 August 2010

website: www.actcoss.org.au

Specific meal or access requirements (please specify):

THE CONSUMERS HEALTH FORUM OF AUSTRALIA

CHF is conducting a consumer **consultation workshop in ACT** to give YOU, the health consumer a say on important issues like:

- How should Government decide what gets covered by Medicare?
- How can we ensure services funded by the Government are the safest, effective and cost effective?
- How can consumers be involved and have their voices heard?
- . How should the Scheduled fee for services be set?
- How should new and yet to be evaluated services be made available?

When: Wednesday 11 August, 10am - 3pm

Where: Canberra

Contact: Sarah Watt

s.watt@chf.org.au

Phone02 6273 544

The workshop is free, lunch and afternoon tea will be provided.

Reimbursement for transport available on request

NATIONAL GALLERY OF AUSTRALIA - SIGN-INTERPRETED TOUR

When: Sunday 1 August 2.30 pm

Artists such as Philip Wolfhagen, Howard Arkley, Shane Cotton, Shaun Gladwell, Patricia Piccinni, Dale Frank and Jon Cattapan are on display and will be introduced by Assistant Curator of Australian art Mim Kelly. These paintings, sculpture and prints explore diverse ideas including colour, light, science and landscape.

Free | bookings essential (02) 6240 6519 | Exhibition Galleries
(meet in Gallery foyer)

Contact:

Adriane Boag

Youth and Community Programs | Education National Gallery of Australia
Phone: 02 6240 6632 | f. 02 6240 6529 |
Email: Adriane.boag@nga.gov.au

ACT MENTAL HEALTH CONSUMER NETWORK

Monthly Movie Drop-Ins

August's Movie Screening will be – ‘K-Pax” featuring Kevin Spacey and Geoff Bridges.

When: Thursday, 5 August 2010

Time: 11am to 1:30pm

Where: Meeting Room 9, Level 2, Griffin Centre 20 Genge St, Canberra City

RSVP: 6230 5796 or actmchn@actmchn.org.au (state Drop-In RSVP in subject line please)

The film trailer can be viewed at <http://www.youtube.com/watch?v=9kLNNVkrKqQ>

EXPRESS YOURSELF – BY PRODUCING AN ARTWORK

Self Help Organisations United Together (SHOUT) are inviting you to produce a painting, drawing, photo etc, suitable for reproduction, that is based on the theme “Helping Each Other to Help Ourselves”.

Your Artwork should be submitted to the SHOUT Office no later than 13 August 2010.

A panel made up of SHOUT Board members and others will then vote for their favourite art work to be used for the cover of the new edition of SHOUT ‘S ‘ACT Directory of Self Help, Support Groups and Community Services’ which will be launched on Awareness Day- 8 September.

Contact:

Amanda Plowright, Executive Director, SHOUT Inc

Phone:02 6290 198

Email: admin@shout.org.au



POETRY COMPETITION

World Mental Health Day is 10 October 2010, the ACT Government and mental health community are marking the occasion by holding a Mental Health Music, Arts and Film Festival called "Mindscapes". The theme of the Festival is recovery, promoting the belief that people with a mental illness can and do recover and go on to live fulfilling lives despite their experience of mental illness. This poetry competition is part of the Mindscapes Festival.

Guidelines for Entries

- The poem must have as its theme "Recovery", and end on a positive note of hope
- Competition open to poems, spoken word and song
- Entries can be submitted as a hard copy via post or via email.
- Closing date for entries is 10th September 2010.

For more info please contact:

Hannah Turner

Ph: 61637688

Hannah.Turner@catholiccare.cg.org.au



SCHOOL BASED APPRENTICESHIPS AND TRAINEESHIPS

When: Wednesday 25th August 2010

Where : Queanbeyan TAFE campus - E Block

Macquoid Street, Queanbeyan

Time: 5pm-7pm (supper will be provided)

Industry expert's will present from 5.30pm-6.30pm. Come along to our School Based Apprenticeship and Traineeship (SBAT) Information Night, learn about how it works, who's involved, government incentives, and what the next step is.

To find out more, please contact Jasmin Blake on 02 62843297, 040 843 212 or email sbatsingbn@gmail.com or online <http://www.qcc.nsw.gov.au/>

HEALTH AND WELLBEING

GET HEALTHY

The Get Healthy Information and Coaching Service(s) is now available in the ACT.

Get Healthy is a free, confidential telephone-based Service funded by ACT Health, which helps people make lifestyle changes regarding healthy eating, being physically active, and achieving and maintaining a healthy weight. Many chronic diseases can be prevented through these simple lifestyle changes. The Get Healthy Service supports people by providing information and ongoing personalised coaching support designed to help ACT adults make lasting behaviour changes.

The Service is based on evidence that telephone coaching is effective in changing healthy eating and physical activity behaviours. The ACT Get Healthy Service is available by calling 1300 806 258 (Monday - Friday 8am - 8pm) or visiting the website www.gethealthy.act.gov.au .

The Get Healthy Service was developed by the NSW Government as the first Government run, individually tailored health coaching service to be provided statewide in Australia. In addition to the ACT, the Tasmanian Government has also joined the Get Healthy Service. The Service has been funded in the ACT through the ACT Government's Budget Initiative: A Healthy Future - Preventative Health Program.

CHALLENGING PAIN - Workshop

Are you living with long term pain? If you are looking for ways to cope with your pain – this workshop make hold some answers. The Challenging Pain workshop aims to provide you with easy skills and techniques to manage your pain effectively.

The course consists of a 2 ½ hour session once a week for 2 weeks (in an accessible venue).

When: Tuesdays 20th July & 27th July (9.30am – 12.noon) Wednesdays 15th Sept & 22nd Sept (1.30pm – 4pm) Thursdays 18th Nov & 25th Nov (9.30am – 12noon)

Venue: Conference Room, Ground floor
Grant Cameron Community Centre
27 Mulley Street, Holder ACT

Cost: Arthritis ACT Members \$15 – Non Members \$25

BOOK EARLY as places are limited.

Contact Arthritis ACT on 6288 4244 or book online

<https://www.arthritisact.org.au/member/member/misc/events>

MULTICULTURAL AGED CARE - SEMINAR SERIES

If you are working with or Supporting Older People who have Experienced War and Trauma -

TORTURE AND TRAUMA - THE IMPACTS ON PEOPLE AS THEY AGE – Presented by Jeanine Lew, Social Worker, Montefiore Homes, Sydney

When: Wednesday 11 August 2010, 9.30 a.m. - 4.00 p.m.

Where: Riley Hall, Pilgrim House, 69 Northbourne Avenue, Canberra 2601

Bookings Essential - No charge ailsa.turrell@act.gov.au

Contact: Ailsa Turrell, CPP Officer, Aged Care Assessment and Liaison Unit ACT Health, GPO Box 825, Canberra ACT 2601

Tel: 02-6205-4794

Fax: 02-6205-1360

Email: ACTHealthCPP@act.gov.au



ACT CHRONIC CONDITIONS ALLIANCE

July Meeting presented by RSI

Medication Issues – Christine Spicer (COTA Peer Education Program

When: Wednesday, 11 August, 7pm - 8:30 pm

Where: Woden Community Services Rooms, 26 Corinna Street Woden

For more information contact: ACT ME Society on 6290 1984 or by emailing admin@mecfscanberra.org.au

EMPLOYMENT OPPORTUNITY

THE ARK

Youth After School Program

Noah's Ark currently has a position vacant for a support worker in our fun and social after school program for young people in high school and college with special needs.

The program consists of cooking, arts & crafts, sports, computer tuition and other various activities that aim to address the key learning areas of self-help and independence, socialisation skills, personal safety and respecting others, healthy nutrition and physical activity, and computer skills.

We are looking for a caring committed staff member who enjoys working with young people.

When: 3:00pm - 6:00pm each weekday afternoon during school terms (there are also opportunities for work on our school holiday program)

Where: Noah's Ark Resource Centre, Bangalay Cres, Rivett

Interested persons wishing to apply are asked to send their resume to: 'The Ark' Team Leader, Amy Jamieson Noah's Ark Resource Centre PO Box 3294, Weston, ACT, 2611 or email: noahsark@grapevine.com.au

FAMILY SUPPORT WORKER

Canberra One Parent Family Support is urgently seeking an experienced Family Support Worker to fill a temporary position Grade 4 level 2 (SACS equivalent).

Fifteen hours a week.

Experience in working with Families/children/ youth work desired.

Role of applicant

To provide family support casework to families, attend network meetings as required.
Attend/facilitate group activities as required

Please call Tanya on 62474282 for more information or to receive the selection criteria send your resume and to tanya@work.netspeed

FREE MEMBERSHIP

**PWD ACT Memberships are FREE for people with disabilities!
Please contact us if you would like to be a member.**

FREE PWD ACT MEMBERSHIP DEFINITION OF DISABILITY

PWD ACT uses the Disability Discrimination Act definition of disability, this broad definition includes:

- Physical
- Intellectual
- Psychiatric
- Sensory
- Neurological, and
- Learning disabilities, as well as
- Physical disfigurement, and
- The presence in the body of disease-causing organisms.

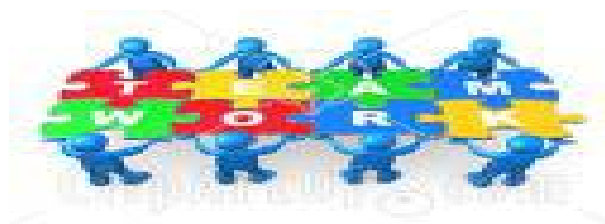
This covers a disability which people:

- Have now,
- Had in the past (for example: a past episode of mental illness),
- May have in the future (eg: a family history of a disability which a person may also develop).

PWD ACT' ORGANISATIONAL MEMBERS

Organisational Name:	Address:	Email Address:	Phone:
ACT Down Syndrome Ass.Inc	PO Box 717 Mawson ACT 2607	admin@actdsa.asn.au	6290 0656
ACT Mental Health Consumer Network		accountant@actmhc.org.au www.actmhc.org.au	6230 5796
ACT TPI	PO Box 5792 Lyons ACT 2606	secretary@acttpi.org	6286 3593 / 629191 85
Advocacy for Inclusion	PO Box 3653 Weston Creek ACT 2611	info@advocacyforinclusion.org	6286 9422
Arthritis ACT	PO Box 4017 Weston Creek ACT 2611	info@arthritisact.org	6288 4244
Australian Railway Historical Society	PO Box 1615 Queanbyan NSW 2620	trains@trains.org.au	6284 2790
Brocklebank's Woodcraft	8 Fitzherbert Pl Bruce ACT 2617	hugh_brocklebank@hotmail.com	6251 6369

Oganisational Name:	Address:	Email Address:	Phone:
CHC Affordable Housing	PO Box 6239 O'Connor ACT 2602	chc@chcaffordablehousing.com.au	6248 7716
Community Events Calendar	communityeventscalender.com.au	communityeventsteam@communityeventscalender.com.au	62558287
Koomarri	PO Box 262 Woden ACT	reception@koomarri.asn.au mgarnett@koomarri.asn.au	6239 1603 / 6280614
Nationsheart Christian Community	PO Box 3125 Belconnen ACT 2617 27 Rae St Belconnen	office@nationsheart.org.au	62531672
Nican	PO Box 110 Mitchell ACT 2911	info@nican.com.au	6241 1220
Sharing Places INC	PO Box 704 Mawson ACT 2607	admin@sharingplaces.com.au	6290 1964
Stroke Association of ACT	PO Box 220 Deakin West ACT 2600	mobeirne@email.com.au	6269 2636
Tandem	PO Box 3510 Manuka ACT 2603	admin@tandem.org.au	6287 2870
TAS Housing	PO Box 4056 Weston Crek ACT 2611	admin@tashousin.com	6287 4344
Volunteering ACT	55 Chandler St Belconnen ACT 2617	volact@volunteeract.org.au	6251 4060
Woden Community Service Inc	PO Box 35 Woden ACT 2606	emma-walter@wcs.org.au	6234 6820
Women's Centre For Health Matters	P Box 385 Mawson ACT 2607	admin@wchm.org.au	6290 2166
YMCA Canberra	Crn Maclaurin & Eggleston Cres Chifley ACT 2606	brett.bowden@ymca.org.au	6281 0124



PWD ACT CONTACT DETAILS

POSTAL ADDRESS

PO Box 717
Mawson ACT 2607

OFFICE LOCATION

SHOUT
Building 1
Pearce Community Centre
Collett Place
Pearce

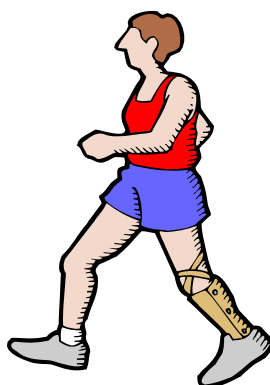
Phone: 02 6286 4223

Fax: 02 6286 4223

Email: pwdact@shout.org.au

Website: www.pwdact.org.au

“For people with disabilities,



by people with disabilities.”

PWD ACT NEWSLETTER

PWD ACT's newsletter is an easily read, compact and timely way of keeping members and supporters informed about our advocacy work, issues and coming events. We strongly encourage people with disabilities to send feedback on systemic advocacy issues directly to us on the above contacts. Please send us an email if you would like to receive your PWD ACT newsletter 'Out & About With Ability' electronically, as this will save our environment. This newsletter is provided with the assistance of the ACT Government through Disability ACT.

